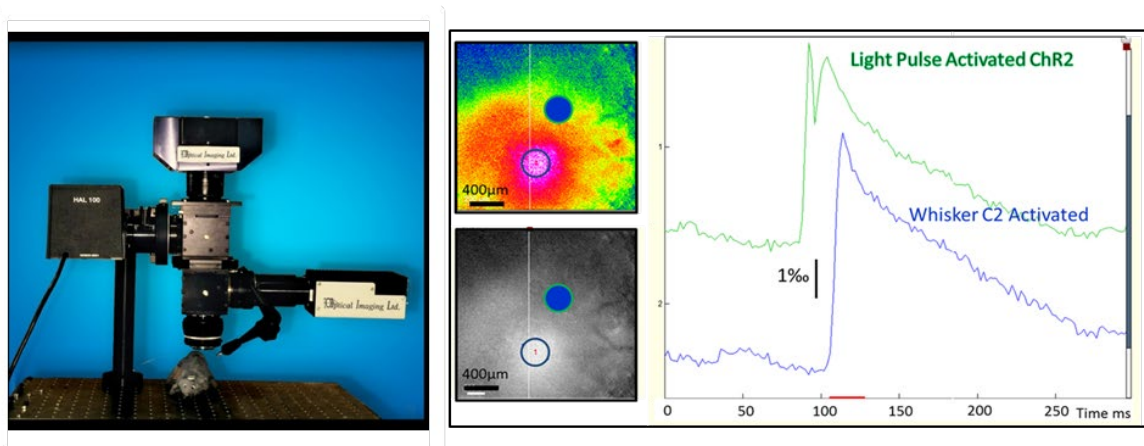




## Imager 3001 – the OptoImage

Turnkey System for Integrated Optogenetics and functional Imaging

- **Optogenetics**-Photo Stimulation with OptoImage Pattern stimulation & functional optical imaging.
- High Frame-Rate Imaging of **VSD Signals** – *in vitro* or *in vivo*.
- **Optogenetics** activation of **Channel Rhodopsin**.



### System Highlights:

- Equipped With a Powerful Computer for Fast Acquisition and Selectable Online Digital Binning to Further Extend Effective Well Capacity as well as Fast Writing to Disk.
- **Pattern Illuminator** with Precise Timing Control: up to 4,000 FPS.
- **Pattern Illuminator** with Robust Spatial Control: Define any pattern shape and pulse Flexible pulse design.
- Full Lab Interface with 24 BNC Connections
- **VDAQ** Software for Easy Data acquisition - Allows you to Design your Experiment and Control all the Laboratory Equipment
- **WinMix** Software for Online and Offline Image Processing
- **LongDAQ** – continuous recording option
- **Master or Slave mode** for behavior experiment.

### Flexible Data Acquisition with Photo-Stimulation :

With a New High Resolution, High Well Depth CCD and CMOS Cameras, and With High-End LED Pattern Illumination, Now You Can first map the regions of interest for cortical stimulation, inform the optical pattern generator which pattern to form, Stimulae in an intelligent way at multiple site at controlled timings and images the responses. Applicable to all models except imager 3001C.

**Don't Spend your Time Reinventing the Wheel- the Imager 3001**  
**Designed by Scientists for Scientists!**